



Hitchin Square, London, E3

BUTLER & STAG



Discover the potential of this split level, two bedroom maisonette located in the heart of Hitchin Square, E3. Renovation enthusiasts will appreciate the opportunity to customize this space to their unique vision, making it the perfect canvas for creating their dream urban dwelling.



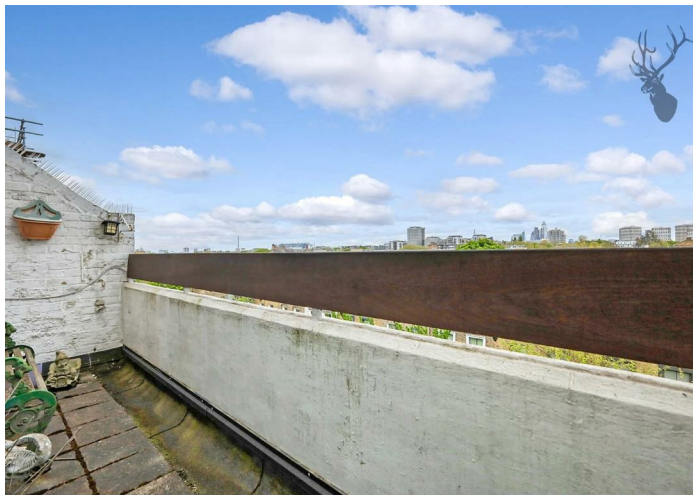
Leasehold

- Top Floor Duplex Maisonette
- Breath Taking Views Across The London Skyline
- Two Double Sized Bedrooms
- Award Winning Victoira Park A Moments Walk Away
- Twin Balconies
- Kitchen Diner
- 836 Sq/Ft Internal Living Space
- Historical Roman Road Market Close By

Located in the vibrant neighborhood of Bow, Hitchin Square enjoys a prime location with easy access to an array of amenities and attractions. Just moments away from the award winning Victoria Park, an eclectic mix of shops, cafes, and restaurants that line the streets of Roman Road, or take a leisurely stroll along the nearby Regent's Canal.

The maisonette features a kitchen dining area, a lavishly sized reception room, two spacious bedrooms spread across the top level, Bathroom, plenty of storage space and two balconies.

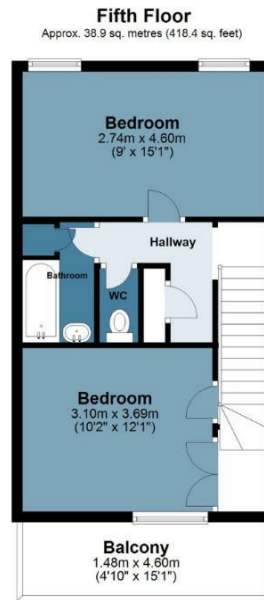
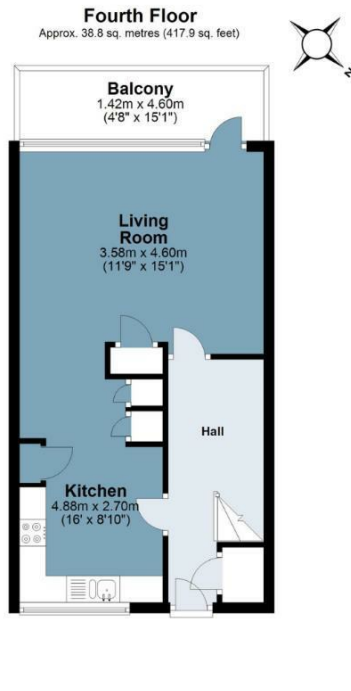
Hitchin Square is within striking distance of the award winning Victoria Park one of east London's most spacious alfresco-eating spots, with two lakes, a boating pond, playgrounds, and a scattering of other Instagram-worthy delights. Excellent transport links are nearby, including several bus routes into the City, whilst Mile End (Central, District and Hammersmith & City) and Bow Road (District and Hammersmith & City) are just about equidistant from the property.





Hitchin Square

Approx. Gross Internal Area 77.7 sq. metres (836.3 sq. feet)



Measurements are approximate and for illustration purposes only. While we do not doubt the accuracy and completeness, we advise you conduct a careful independent assessment of the property to determine monetary value
© @modephotouk www.modephoto.co.uk

BUTLER & STAG

☎ 020 8102 1236

🏠 508 Roman Road, Bow, London, E3 5LU

✉ bow@butlerandstag.com

IMPORTANT NOTICE - These particulars have been prepared in good faith and they are not intended to constitute part of an offer or contract. We have not performed a structural survey on this property and the services, appliances and specific fittings have not been tested. All photographs, measurements, floor plans and distances referred to are given as a guide and should not be relied upon.

www.butlerandstag.uk